

THE BĀNĪTIS (NARROW GAUGE TRAIN) LAND

TO THE MILL ALONG THE TOBACCO POUCH



GPX file



Nr. 167 | 20 km

Route

This Bānītis Land cycling route has a distinct rural charm – beautiful landscapes, flowering meadows and exciting descents. The bordering of the Alūksne highland and the Gulbene lowland makes the landscape special here, but the museum in Ate shows the thoroughness of a Vidzeme farmstead. The narrow gauge railway is an integral part of this place, so the route passes two railway stations, allowing the cycling adventure to be combined with a trip by Bānītis.

Direction of the route

Umernieki Station – Kantor Inn – Gulbji Cross Stone or Tobacco Pouch – Otte Manor – Kalncempji rural district Viktors Ķirps Ate Museum – Farm “Jaungreīves” – Bee Farm “Lejas” – Paparde Station – Jaunanna Border Stone – Monument in Ezeriņi Cemetery

Road surface

100% gravel/dirt roads

Recommended time

May – October

Length

20 km

Duration

~ 3 hours

Level of difficulty

Average

Start and finish point

Umernieki Station

GPS: 57.3370, 27.0170

Marking

In nature are marked

Public transport

The “Gulbene–Alūksne Bānītis” runs along the section Gulbene–Alūksne/Alūksne–Gulbene twice a day. The narrow gauge train schedule – www.banitis.lv.

Worth to know!

Depending on meteorological and other conditions, there may be bad road condition, sand, mud. The route goes along private houses, where there may be unattended dogs. Everyone is responsible for their own safety during the route. Rescue services: 112. Follow the principle “

Walking in nature. Leave no trace of your visit!”

Service

Bicycle transportation, maintenance and repair

Ltd “Vidzemes velomeistars”
18B Tīrgotāju Street, Alūksne
+371 29360695

Ltd IG “Bicycles”
24 Helēnas Street, Alūksne
+371 29288370

Self-service bicycle maintenance stands

25A Pils Street, Alūksne
GPS: 57.4245, 27.0487

52 Jāņkalna Street, Alūksne
GPS: 57.4126, 27.0453

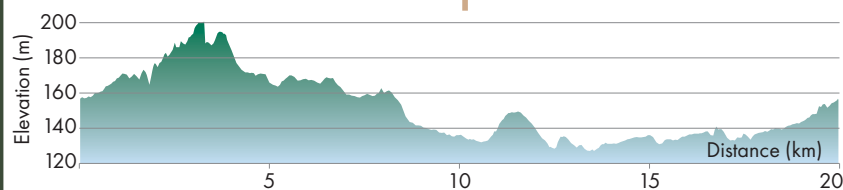


Photo: L. Klaviņa



Photo: L. Klaviņa



Photo: L. Klaviņa



Photo: A. Čekulis



Photo: A. Čekulis



EIROPAS SAVIENĪBA
EIROPA INVESTĒ LAUKU APVIDOS
Eiropas Lauksaimniecības fonds
lauku attīstībai



visit
Alūksne
Oļņkšva

www.visitaluksne.lv



www.visitgulbene.lv

Atbalsta Zemkopības ministrija un Lauku atbalsta dienests

Tūrisma maršruts izveidots un materiāls izdots Latvijas Lauku attīstības programmas 2014. – 2020.gadam apakšpasākuma “Starpterritoriālā un starpvalstu sadarbība” realizētā projekta Nr. 19-00-A019.332-000006 “Bāniša zemes labumi – 33 km garumā un platumā!” ietvaros.

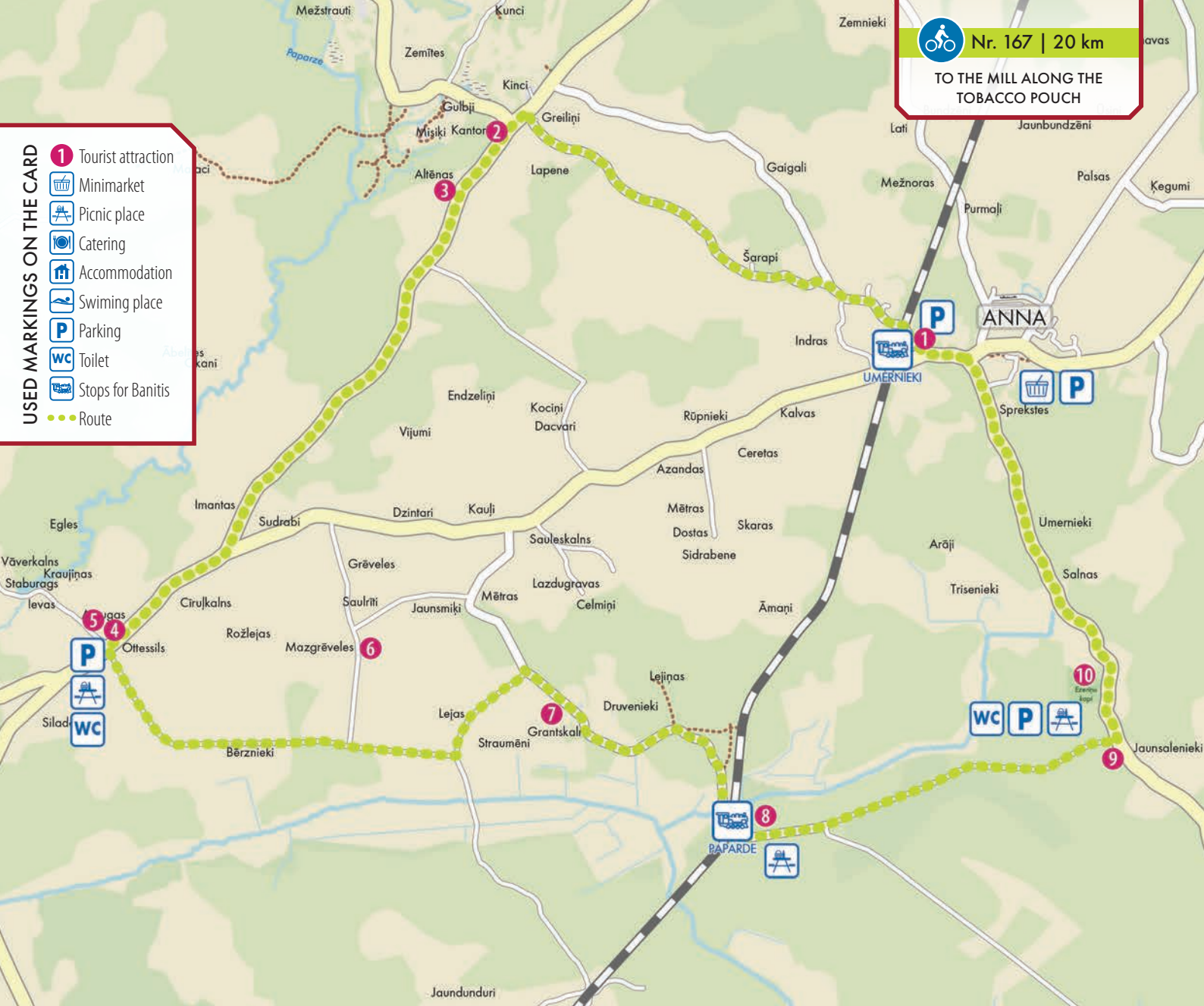


Nr. 167 | 20 km

TO THE MILL ALONG THE
TOBACCO POUCH

USED MARKINGS ON THE CARD

- Tourist attraction
- Minimarket
- Picnic place
- Catering
- Accommodation
- Swimming place
- Parking
- Toilet
- Stops for Banītis
- Route



1 Umerņieki Station

The flag station on the narrow gauge railway line was established in 1928 at the request of the locals, but in 1937, a station building with a separate household building was constructed here. The Umerņieki Station is the only station building on the Gulbene-Valka line built during the years of the first independence.

GPS: 57.3370, 27.0170

2 Kantorkrogs (Kantor Inn)

Once upon a time, Kantorkrogs was a cluster of several houses owned by the Otte Manor. A school operated in one of the buildings from 1869 to 1931. Other buildings were a pub and a shelter for the disabled. Already at the end of the 19th century, a shop was built here, and every year in March there was a special day, when masters hired new servants here. Today, only one building has survived under the name of Kantorkrogs.

GPS: 57.3483, 26.9716

3 Gulbji Cross Stone or Tobacco Pouch

It is a peculiar stone with a carved cross and a cavity. There is a story about a man who died of a lack of tobacco. Stop and find out the story!

GPS: 57.3448, 26.9666

4 Otte Manor

The manor as a half-manor or cattle manor was formed in the 18th century. It is marked as the centre of the manor on the maps of the Riga Province in 1772 and the Valka District in 1793. Today, the manor granary, the residential house, which is located in the centre of the Otte Manor, as well as the sauna and smithy in the territory of the Kalncempji rural district Viktors Ķirps Ate Museum have been preserved from the buildings of the manor. Next to the museum, there is also a preserved watermill.

GPS: 57.3177, 26.9275

5 Kalncempji rural district Viktors Ķirps Ate Museum

The museum is special with its magic of a Vidzeme farmstead. Here you can visit 11 different buildings from the surrounding farmsteads and Otte Manor, study the farm machinery and various tools belonging to the farmstead made during the first Latvian independence, and even try to operate them.

T.: +371 26563597, +371 25664436

GPS: 57.3205, 26.9214

6 Farm "Jaungrēveles"

The road to the farm is one of the most scenic places in the area. Satisfy your desire to stop and enjoy the picturesque landscape here! The farm offers the purchase of beekeeping products, a farm tour and a candle workshop.

T.: +371 26312131

GPS: 57.3176, 26.9563

7 Bee Farm "Lejas"

On your way to the farm you will pass fields of sinapis, melilot, phacelia and buckwheat, which are used as apiary and seed material. The farm offers tasting and purchase of honey of various flowers.

T.: +371 29432313

GPS: 57.3135, 26.9792

8 Paparde Station

The station at Paparde was constructed several years after the railway was put into operation. It was around 1907. A water tower next to the passenger building provides additional water supply to the steam engine. Near the station there is also a comfortable area for different activities, also for picnics.

GPS: 57.3070, 26.9971

9 Jaunanna Border Stone

Stones have long been used to mark property boundaries. The Jaunanna Parish borders several parishes, and large boulders have been erected in four border places. This particular stone marks the border between the Jaunanna Parish and the Anna Parish.

GPS: 57.3120, 27.0401

10 Monument in Ezeriņi Cemetery

In the cemetery, there is a monument to the soldiers from the Anna Parish who were killed in World War I and the Latvian War of Independence. The money for the monument was collected by the Anna Parish Department of the Defenders (Latvian: *Aizsargi* – a paramilitary organisation in Latvia during the period between 1918 and 1939), and it was inaugurated in 1933. On 18 November 1940, the monument was shot at, and the traces left by bullets are still visible. The cemetery dates back to the year of 1925, and the grave of Minna Āboliņš is considered to be the first burial place there. Oskars Zemnieks, Eduards Meijers and Aleksandrs Elmārs Ķesteris, the holders of the Order of Lāčplēsis (the first and the highest Latvian military award), are also buried in the cemetery.

GPS: 57.3149, 27.0356